

# SakKijânginnatuk Nunalik

*‘Healthy Homes in Thriving Nunatsiavut Communities’*

Collaboration for Sustainable Communities

Corner Brook, (SWGCG), NL

November 13, 2015

Daniel G. Pottle

Minister of Finance, Human Resources and Information Technology  
Nunatsiavut Government





ARCTIC  
INSPIRATION PRIZE



PRIX INSPIRATION  
ARCTIQUE

[www.arcticinspirationprize.ca](http://www.arcticinspirationprize.ca)

*“The Prize recognizes and encourages teamwork and collaboration among diverse groups and organizations, from north and south, in **addressing the causes rather than the symptoms** of issues of importance to the Canadian Arctic and its Peoples.”*



# Housing Needs Assessment (2012)

- All households in Nunatsiavut, 93% response
- Tripartite agreement between the NG, the GNL and AANDC
- Provides data on: individual and family housing needs and preferences, condition of existing housing stock, etc.



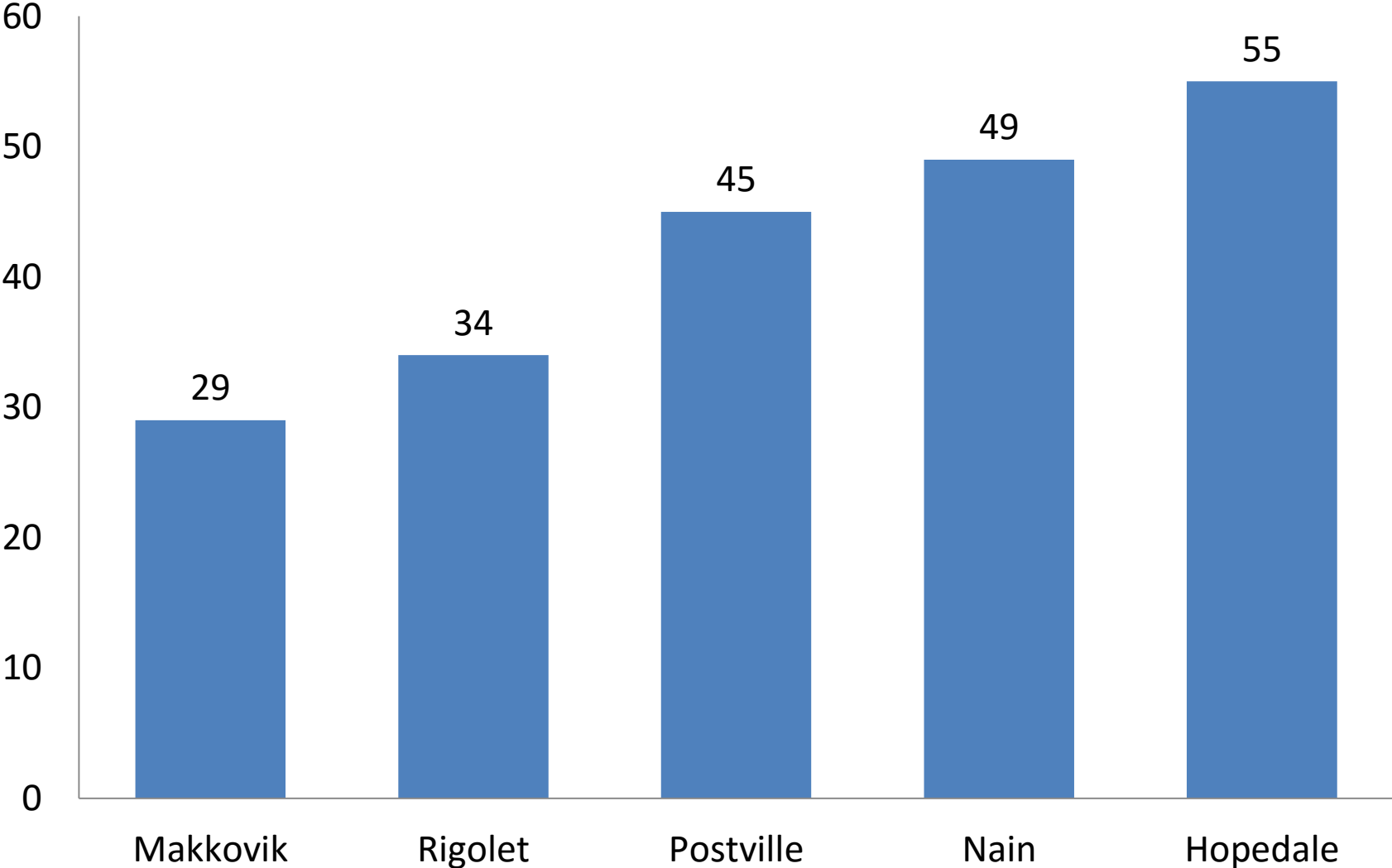
# Prevalence of mould



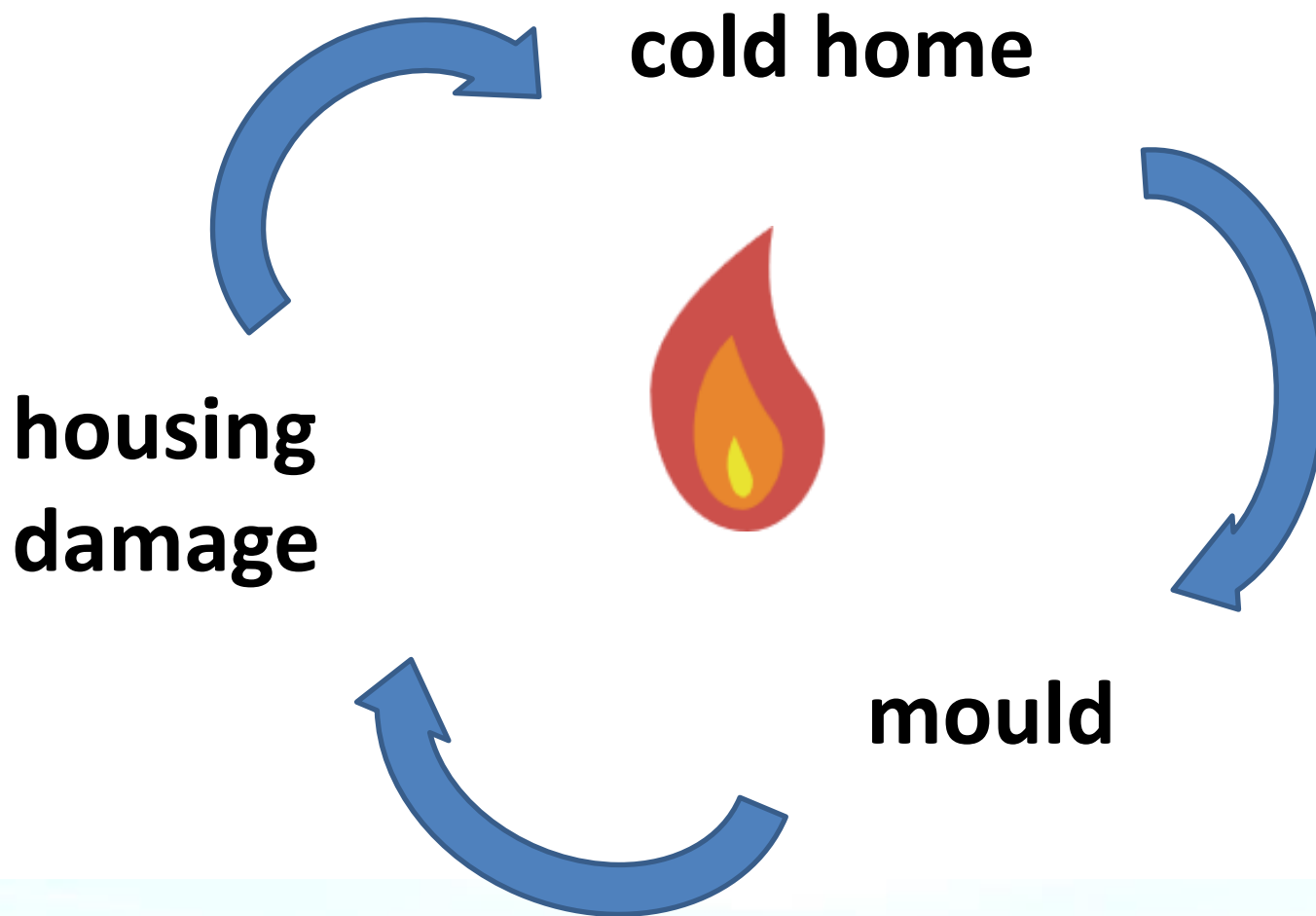
*44% of  
homes  
have mould*



# Portion of homes with mould (%)







# Prevalence of overcrowding



*3% of homes in  
Canada,  
10% of homes in  
Nunatsiavut (15% -  
Nain, 14% -  
Hopedale)*



# Housing Design Charette (2014)

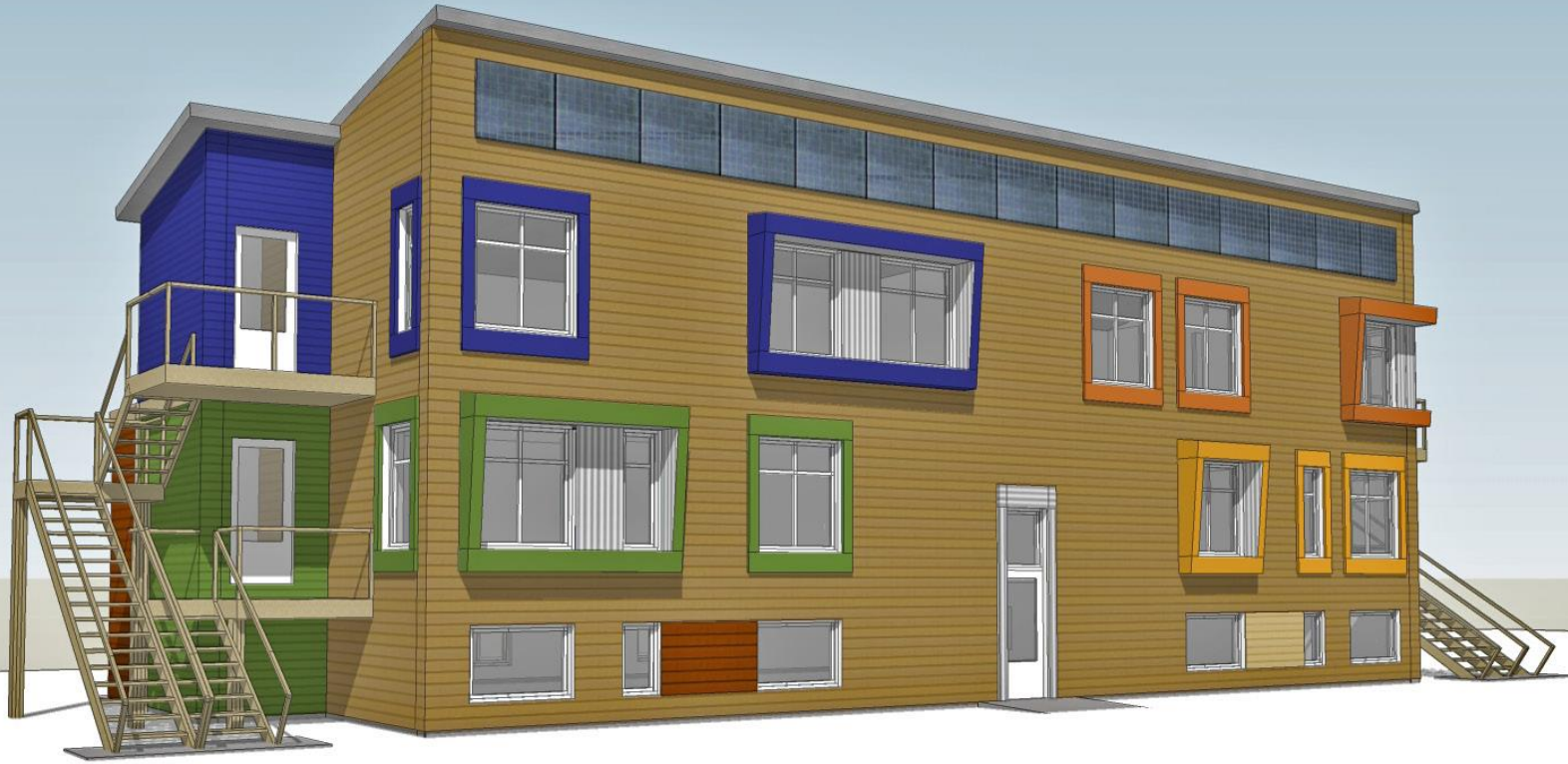
A charette is an illustrated brainstorm. *What design features do residents need in their homes? What are best practices in northern housing design?*

## We brought together:

- Northern housing design experts (engineers and architects)
- Nunatsiavut residents
- Local housing design and construction experts (including TRHA and builders)







**DRAFT DESIGN 2014- FGMDa**









Iiusuak Cultural Centre (Nain)

Kangidluasuk (TMNP Base Camp and Research Centre)

Take-Back Nunatsiavut: End of Life Vehicle and Sustainable Management Project

Alluak Sangillivalianginnatuk – Going Off, Growing Strong

Arctic Char Social Fishing Program

Geotechnical Mapping (Nain, Hopedale, et al communities)

Avativut, Kanuittailinnivut – Our Environment, Our Health (ULMA)

IBSW, IBEd., LITP

NG/ICG Project Management

Nain Research Centre

# Successes

- Building partnerships that help us build capacity and make the most of our resources
- Being creative and industrious in securing external funding
- Innovative research programs that are shaping targeted housing programs and policy
- Strong, interdepartmental team, support from Executive Council and the Beneficiaries we serve





*Nakummek!*

