

St. Anthony Basin Resources Inc.

“Part of our Future... Part of our Region”



Minister Mifflin 1997 Announcement

“I am announcing today a special allocation of 3000 tonnes for the Northern part of the Great Northern Peninsula, which takes in communities from Goose Cove to Big Brook.

The revenues derived from this allocation will be used to finance fisheries development opportunities for fishermen and plant workers. It will be used in an area where employment opportunities in the fishery have been extremely limited since the collapse of the northern cod stock.

It is now up to the fishermen and plant workers to establish an acceptable organizational structure to administer this allocation.”

GREAT NORTHERN PENINSULA



Board of Directors



- Fish processing Workers - 4
- Fish Harvesters – 5
- Community Reps. – 4
- Chamber of Commerce – 1
- Rising Sun Developers - 1

Staff



- Executive Director
- Assistant Executive Director
- Program Coordinator
- Aquaculture Workers – 3 seasonal

Mandate



To administer a 3000mt allocation of Northern Shrimp on behalf of the communities from Big Brook to Goose Cove, in a manner resulting in expansion of the region's economic base and improved employment opportunities for its residents.

NEW HARVESTING CONTRACT SIGNED



In 2012 SABRI and Clearwater successfully negotiated a new harvesting contract for the 3000 mt allocation of Northern Shrimp. It is for a ten year term which commenced on April 1st 2013, upon expiration of the original agreement.

The Board of Directors of SABRI is very pleased with the partnership with Clearwater and look forward to continuing to work together over the next ten years.

Partnerships

Clearwater Crewing



Partnership - Clearwater

- Invested in excess \$15.9 million in infrastructure





2015-11-22

Partnership – St Anthony Seafoods



Partnership - Clearwater



Partnership – St Anthony Cold Storage (EIMSKIP) Inc.



St. Anthony Cold Storage



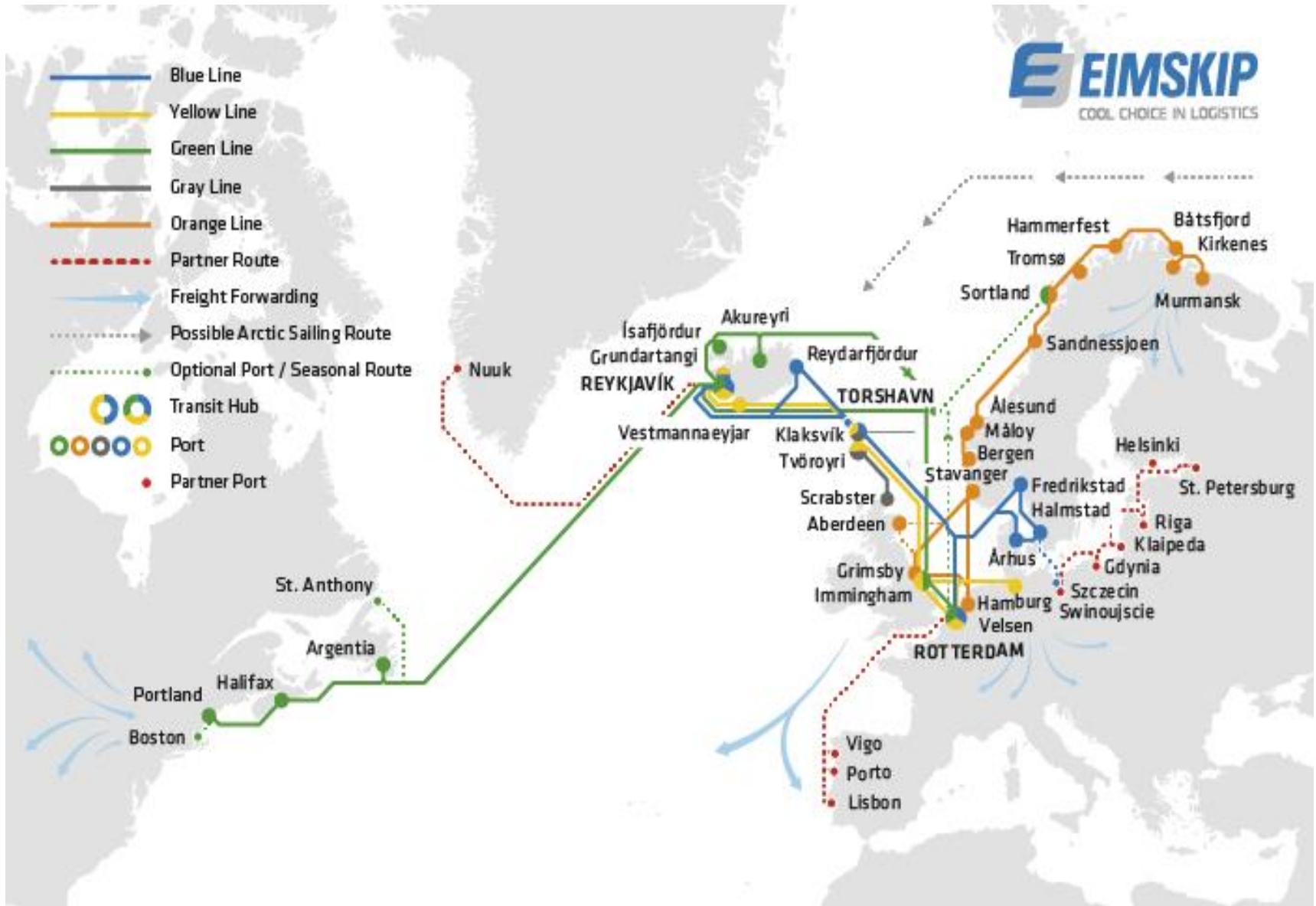
SABRI Signs Lease Agreement

- ❖ ***20 year deal signed with Eimskip on February 4th, 2015.***
- ❖ ***New operational name as of March 1st, 2015 is :
St. Anthony Cold Storage
(Eimskip) Inc.***



Partnership – St Anthony Cold Storage (EIMSKIP) Inc.







Fishery Development

- Partner with Port Authority
 - Ice Breaking
 - Purchase of a boat lift
- Sea Cucumber Surveys
- Whelk Projects
- Salt Fish Projects
- Toad Crab Project
- Snow Crab Bait Projects
- Mackerel Trap Projects

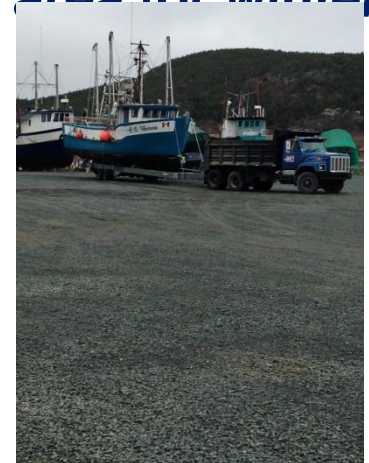
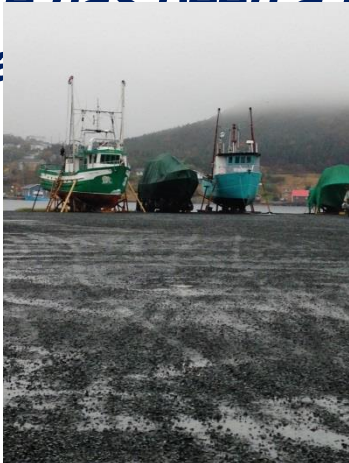


Support for Fisheries Initiatives



Marine Lift Infrastructure

- **SABRI partnered with The St. Anthony Port Authority , The Town of St. Anthony, BTCRD and ACOA to fund a project to Construct a ramp and lay-down area to operate the Marine Lift From. SABRI's Contribution was \$100,000 of a \$900,000 project.**
- **Small boats have been using the lay-down area since the fall of 2014 .**
- **There has been a total of 23 boats on the lay-down area for winter storage**



Fishery Development



Small

Loans

- *In partnership with the Eagle River Credit Union, and NORTIP, SABRI offers low interest loans to fishermen.*
- *A loan can be any amount up to a maximum of \$20,000 with interest rates determined by the financial institution involved. At the end of the term of the loan SABRI will buy the fishermen's interest down to 5% providing the loan has remained in good standing.*
- *SABRI also provides a 50% guarantee of each loan. There is a total of \$200,000 available for fishermen to*

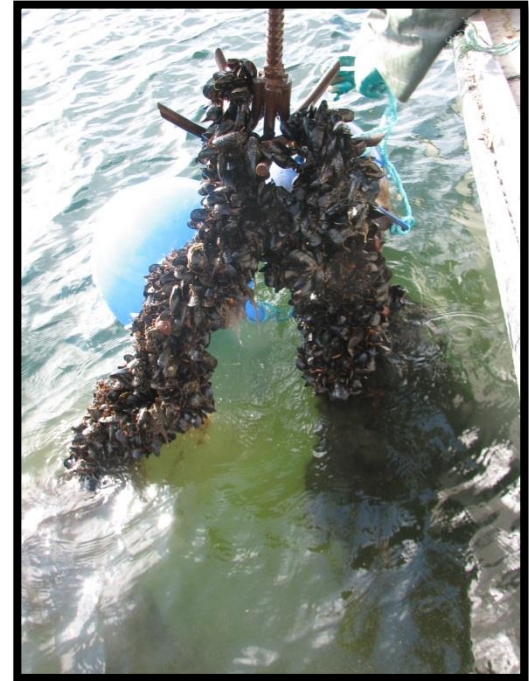


Aquaculture



Mussel Farming

- **SABRI continues to operate three mussel farm sites and a primary processing plant providing a superior product maintaining excellent meat yields throughout the season. Local sales continue to increase.**



- **We continue to investigate ways to maximize the output of the farms and to increase**

- **SABRI's aquaculture operation continues to employ three seasonal employees and one student through the Canada Summer Jobs Program.**

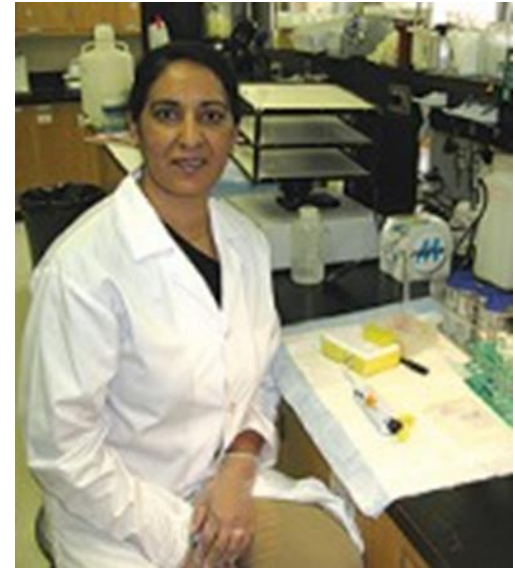


Aquaculture



Nutraceuticals

SABRI has been working with MUN's Department of Biochemistry , Dr Cheema, to determine the benefits of Blue Mussel and sea cucumber to target insulin resistance and obesity. The first report was published in Sept 2014 showing that BM and SC are new sources with the potential to > target insulin resistance and obesity. We have entered into a new two year project with MUN to further study this potential source.



<http://www.mun.ca/gazette/issues/vol40no15/research.php>

Youth Initiatives

- Scholarships/Bursaries - \$250,000 year to date
- Junior Achievement Sponsorship - \$600 annually
- Youth Recreation Program - \$13,000 – annually
 - Junior Girls Broomball
 - Junior Boys Broomball
 - Dolphins Swim Team
 - Viking Trail Ski Club
 - Northern Blades Figure Skating Club
 - Aurora Nordic Ski Club
 - St. Anthony & Area Minor Hockey

Donations



SABRI Donates to various groups and organizations annually
\$20,000

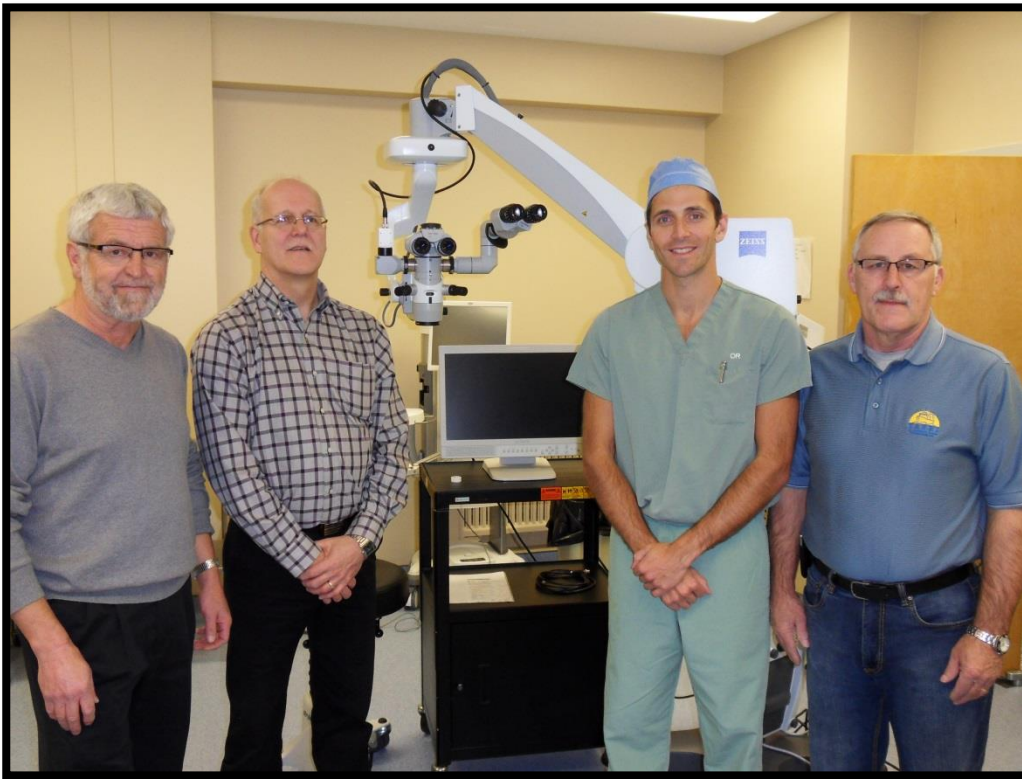
Some of these included :

- ***\$10,000 to the Grenfell Foundation***
- ***\$ 3000 to the Kids Eat Smart Program***
- ***\$500 to Ronald McDonald House***
- ***\$250 to the St. Lunaire-Griquet Mussel Festival***



Donations

SABRI donated \$150,000 to the Grenfell Foundation to fund the purchase of an Ophthalmic Surgical Microscope



Community Development



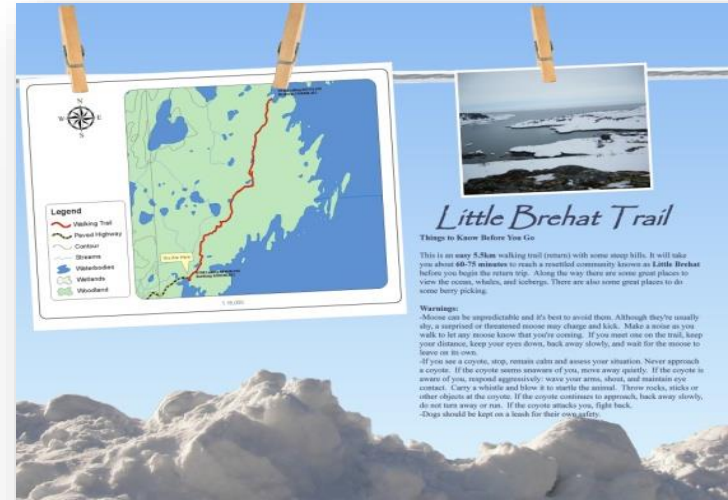
- *A funding partnership between SABRI, BTCRD and ACOA allowed for continuation of Community Development work in 2014*
- *Finishing touches were completed on all trails started in 2013*
- *Runes stones are being installed to finish the Leif Erikson statue project .*

- *In Partnership with Bell Aliant and the Provincial Government , SABRI has provided \$ 30,000 to ensure broadband coverage is extended to St. Carols , St. Anthony Bight and Great Breatat.
Total project cost \$572,400.00*

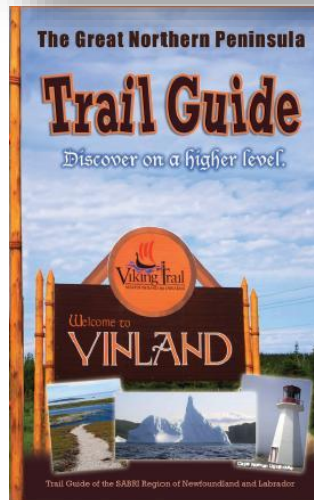


Community Development

- Invested \$600,000 to date.



2015-11-22



Gateway Sign



Whale Point Trail(Wild Bight)



Community Development



Community Development



2025-11-22

Community Development



2015-11-22



Community Development

<http://www.sabrinl.com/Oral%20History.html>

• Oral History Project



GREAT NORTHERN PENINSULA

Wild Bight

A People of Spirit, Courage and Resourcefulness

SABRI

PREFACE

With them the seed of wisdom did I sow
And with mine own hand laboured it to grow
And this was all the harvest that I reaped
"I came like Water, and like Wind I go."

- The Rubaiyat of Omar Khayyam

What do the people of northern Newfoundland have in common with a poet by the name of Omar Khayyam? At first glance, nothing, except that this obscure piece of Persian poetry captures the essence of what this year-long Community History Project has taught me.

In the past year I ventured into sixteen communities: telephoning, knocking on doors, and sitting at kitchen tables drinking endless cups of tea, trying to learn customs, traditions, and wisdom from the older people in northern Newfoundland so that the stories could be set down in writing and preserved for future generations. *With them the seed of wisdom did I sow...*

Back at the office, after each interview, I would review the outcome of each story and try to write in a format that would satisfy not only the person interviewed, but the people who would read the stories at some future date. *And with my own hand laboured it to grow...*

By year's end there were stacks of photographs, pages of typewritten interviews, maps criss-crossed with names and dates, and hand-drawn pictures submitted by enthusiastic contributors. In people's homes there were interviews where we laughed, cried, walked over hills to the back of land, walked along winding pathways to graveyards, ventured out on the high seas in boats enjoying boil-ups with scalding tea, fisherman's brews, beans and bread, and still more stories.

In these interviews, I was often perplexed by words and expressions totally unfamiliar to me and, without

the assistance of my husband, Len Tucker, I suspect the dialect would have defeated me utterly. Yet it is the words and expressions of northern Newfoundland that are, and were, the lifeblood of communication in a time when modern technology was unheard of. I learned that, while these are official names on Newfoundland maps, local fishermen have their own names for islands, bays and coves. I learned that the people who settled this wonderful, terrible place have an intimate relationship with the sea and the land that no tourist or outsider can truly fathom or appreciate. And at the end of the year, I knew that I had only managed to collect a few small pieces of the puzzle that make up a larger picture of hardships endured, joys celebrated, and lives lived to the fullest. *And this was all the harvest that I reaped...*

I came like water and like wind I go...

This precious generation of people you will read about in these pages were born, lived, and will, one day, pass on. In writing their stories I have attempted to grasp the "wind and water" of their lives – as well as their customs and traditions – which are fast slipping away into obscurity.

This is not so much a historical document as it is an opportunity for these people – in their own time and in their own way – to tell the stories that were nearest and dearest to their hearts. Whether you are a student, a come from away, or a Newfoundlander, you may find in these pages the heart and soul of the people of Newfoundland.



2. (Left) Samuel and Leah, my parents. In this picture Samuel is holding my brother Edward and Leah is holding my brother Leonard. Leah was an Elliott from Cook's Harbour.



3. (Right) School Parade, 1954. Possibly a Confederation march. L-R: John Quinlan (cousin), Llewellyn Brown (brother) arms raised, Henry Brown, and Gerald Adoy.



4. (Left) School Parade, 1954: Flags are the Union Jack: some appear to be homemade. (R-L: reverse order, starting at bottom right) Beatrice Quinlan, Martha Brown, Elizabeth Larkin, Christina Larkin, Joan Brown (blond hair) and, right over Joan's head is Margaret Brown.

Landings and Values by Species



Big Brook to Goose Cove in Calendar Year 2014

Species Name	Unit Wt.	Landed RW	Number of Animals	Landed Value
Cod, Atlantic	Kilos	181,808	0	\$ 218,405
Turbot/Greenland halibut	Kilos	1,810,444	0	\$ 9,560,479
Grenadier, rough-head	Kilos	491	0	\$ 73
Other Groundfish	Kilos	7,041	0	\$ 27,103
Groundfish Total		1,999,785	0	\$ 9,806,060
Capelin	Kilos	1,236,337	0	\$ 392,490
Other Pelagic	Kilos	394,621	0	\$ 139,899
Pelagic Total		1,630,958	-	\$ 532,389
Shrimp, Pandalus Borealis	Kilos	16,956,810	0	\$ 45,577,745
Crab, Queen/Snow	Kilos	772,751	0	\$ 3,986,438
Other Shellfish	Kilos	136,829	0	\$ 478,824
Shellfish Total		17,866,390	-	\$ 50,043,007
Miscellaneous and Marine Mammals Total	Kilos	14,654	770	\$ 54,611
Overall Total		21,511,787	770	\$ 60,436,067

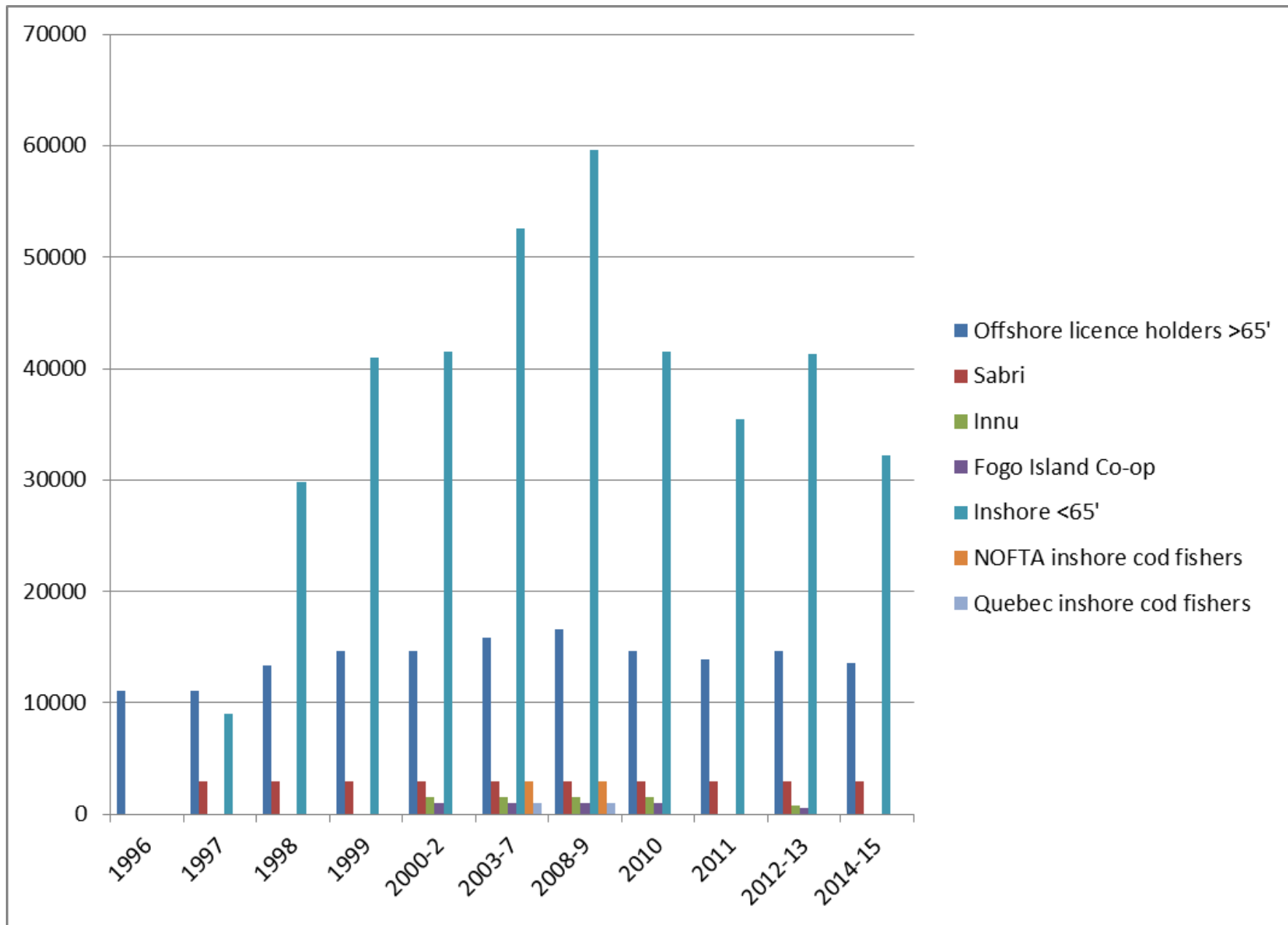
Data Courtesy of DFO Statistics Division, NL Region



Northern Shrimp			SFA 6	SFA 6	Landings	Landing Value	%
			Inshore	Inshore			landed
			Allocation	Harvested			SABRI'S
							Region
Shrimp, Pandalus Borealis	mt	2014	36376	36881	16,957	\$45,577,745	46%
Shrimp, Pandalus Borealis	mt	2013	41293	40461	18,849	\$35,809,206	47%
Shrimp, Pandalus Borealis	mt	2012	41293	40792	16,586	\$28,881,247	41%
Shrimp, Pandalus Borealis	mt	2011	35459	36276	19,890	\$35,930,395	55%
Shrimp, Pandalus Borealis	mt	2010	41529	41122	17,232	\$19,105,821	42%
Shrimp, Pandalus Borealis	mt	2009	59613	26894	11,254	\$12,451,736	42%
Shrimp, Pandalus Borealis	mt	2008	59613	57731	24,289	\$29,077,211	42%

SFA 6

	1996	1997	1998	1999	2000-2	2003-7	2008-9	2010	2011	2012-13	2014-15
Offshore licence holders >65'	11050	11050	13360	14603	14603	15833	16612	14603	13928	14603	13559
Sabri		3000	3000	3000	3000	3000	3000	3000	3000	3000	3000
Innu					1500	1500	1500	1500		807	
Fogo Island Co-op					1000	1000	1000	1000		542	
Inshore <65'		9050	29840	41029	41529	52599	59613	41529	35459	41293	32151
NOFTA inshore cod fishers						3000	3000				
Quebec inshore cod fishers						1000	1000				
Total Quota	11050	23100	46200	58632	61632	77932	85725	61632	52387	60245	48710



WWW.SABRINL.com



**Thank you
for
your attention**